

Modular Preparation 500 mm Hot Cupboard with Hinged Door

ITEM # _____

MODEL # _____

NAME # _____

SIS # _____

AIA # _____


121830 (TERPE5)

 Hot Cupboard with 1 hinged
 door, 500mm

Short Form Specification

Item No. _____

Constructed entirely in 304 AISI stainless steel. Front and rear longitudinal stainless steel c-channel reinforcement. Internal and external side panels with sound deadening reinforcements to strengthen structure. Door incorporates a sound deadening internal panel and is fitted with 304 AISI stainless steel hinges allowing an opening of 180° degrees. 150mm height-adjustable (0/+90mm) oversized feet (65x65mm) can be removed for masonry installation. 45° degree internal side corner junction system. 304 AISI middle shelf, with inner double fold to eliminate gaps between sides and back, height-adjustable in 3 positions with a stainless steel support to avoid twisting. Hot cupboard with channeled ventilation system (2-way output) to allow for a correct airflow and even temperature within the storage area. Fan-assisted heating via armoured elements assures temperature ranges from 30° to 90°C. Removable control panel with mechanical thermostat, green ON/OFF indicator light and orange indicator light for heating element operation.

Main Features

- Masonry installation possible by simply removing feet.
- Extremely easy to clean thanks to the smooth edges.

Construction

- Front and rear lengthwise stainless steel c-channel reinforcement, 15/10 (16 gauges).
- Sound deadening reinforcements between internal and external side panels to strengthen structure.
- Mounted on 150 mm height adjustable (0/+90 mm) oversized (65x65 mm) feet.
- Internal sides supporting the structure to have 45° degrees internal side corners junction system.
- 30 mm high middle-shelf in AISI 304 stainless steel, height-adjustable in 3 positions, with inner double fold to eliminate gaps between sides and back.
- Made in 304 AISI CrNi 18/10 stainless steel with Scotch Brite finish.
- Hinged door with sound deadening internal panels, fitted with 304 AISI stainless steel hinges on the inner sides, allows a 180° degree opening.
- Supplied with a channeled ventilation system (2 way outputs) which allows a correct airflow and even temperature inside the storage area.
- Fan assisted heating via armored elements ensuring temperature range from 30° to 90°C.
- Detachable control panel with mechanical thermostat and on/off green and orange indicator light for heating element operation.

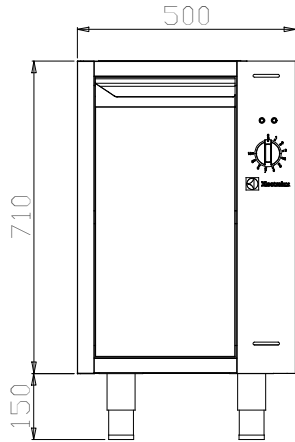
Optional Accessories

- Stainless steel plinth, 500mm PNC 855821
- Stainless steel plinth for end elements, 700mm depth PNC 855837

APPROVAL: _____



Front



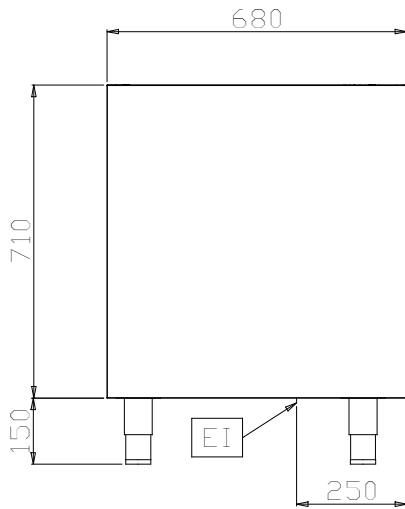
Electric

Supply voltage:	
121830 (TERPE5)	230 V/1 ph/50/60 Hz
Total Watts:	1.4 kW

Key Information:

Cabinet width:	330 mm
Cabinet depth:	645 mm
Cabinet height:	620 mm
N° of doors:	1
Door Type:	Hinged
External dimensions, Width:	500 mm
External dimensions, Depth:	680 mm
External dimensions, Height:	860 mm
Net weight:	9 kg

Side



EI = Electrical inlet (power)

Top

